



Through our commitment to reconciliation, Manna Gum Community House acknowledges the Australian Aboriginal and Torres Strait Islander peoples as the first inhabitants of the nation and the traditional custodians of the lands where we live, learn and work



ART-CUBE



CONTENTS

five

Funders, supporters & partners

six

Board Report

seven

Treasurer's Report

eight

Manager's Report

nine

Education Report

ten

Toora Hub

eleven

Our Place - Youth Group

twelve

Community Café

thirteen

Community Value Report

fourteen

Pearl Park Music Festival

sixteen

Services Australia Agency

seventeen

Emergency Relief

eighteen

2023-2026 Strategic Plan

twenty-two

Board & Staff

twenty-three

Financial Report





Manna Gum Community House is a registered charity with the Australian Charities and Not-for-profits Commission

FUNDERS, SUPPORTERS & PARTNERS

Adult Learning Australia
Aherns Fruit Market
Bass Coast Adult Learning
Bass Coast South Gippsland Food System Alliance
Buckley Park Community Farm
Deep Creek Nursery
Foster Arts Music and Drama Association (FAMDA)
FareShare
Fish Creek Community Garden
Fish Creek Primary School
Foster IGA
Foodbank Victoria
Foster Chamber of Commerce
Foster Foodworks
Foster Medical Centre
Foster Primary School
Foster RSL
Foster Secondary College
Foundation for Rural and Regional Renewal
Foster Youth Assist Clinic
Gardiner Dairy Foundation
GippSport
Justice Michelle Gordon AC and family
Latrobe Health Services
Leongatha Community House
Leongatha Community Farm

MacKenzie Family Foundation
Manna Community Garden
Milpara Community House
MYLI Foster Library
Neighbourhood Houses Gippsland
Neighbourhood Houses Victoria
Prom Coast Centres for Children
Prom Coast Food Collective
Prom Coast News
Prom Meats
Qube Logistics
Services Australia
Skills and Jobs Centres
South Gippsland Hospital
StreetSmart Australia
St Vincent de Paul
Sue Pilkington and Associates Pty Ltd
TAFE Gippsland
The Kitchen Table
Toora and Foster Community Bank
Toora Lions Club
Toora Primary School
Venus Bay Community Centre
VicHealth
Volunteering Victoria
Yooralla, Leongatha



Skills for study
work and life



BOARD REPORT

The past twelve months at Manna Gum have focused on continuing to build strong networks and collaboration within the Corner Inlet Community. We achieved this through key projects, including hosting the ArtCubes, strengthening support for people in vulnerable circumstances, and our involvement in the Bass Coast South Gippsland Food System Alliance. A grant from the Department of Families, Fairness and Housing enabled a review of our emergency relief service, the purchase of new kitchen equipment for our busy food services, and the setup of a Kitchen Tool Library to be launched in 2026.

Over the past year, we were also pleased to support several important organisations that contribute to our community connections—the Prom Coast News, the Prom Country Farmers Market, and the Foster Community Plan. For Prom Coast News, our auspice arrangement enabled the group to establish themselves and progress toward incorporation. For the Prom Country Farmers Market, the auspice helped reduce the administrative burden of running an incorporated organisation. For the Foster Community Plan, we supported a group of volunteers engaging with the community to shape local priorities. These arrangements reflect our commitment to supporting local initiatives that strengthen connection, communication, and resilience across Corner Inlet.

The South Gippsland Shire Council ArtCubes were in residence at Manna Gum from October to January, hosting over thirty resident artists, numerous workshops, and multiple community engagement events. The first was a free Halloween event for children and families, held in partnership with Foster Primary School, who provided artwork for the event. Thanks to Manna Gum volunteers, many sausages were eaten, mountains of popcorn popped, children and adults spooked, and laughs had all around. Highlights included Emma McKay, Kim White, and Pixie Jones from FAMDA performing in the garden, and Noelle Bonnin as an amazing witch.

We also held a book launch in conjunction with Manna Garden celebrating the second edition of Juneen Schulz's *A Year in Our Gardens*. The first stage of the Hygiene Station feasibility study is now complete, and work can begin on funding and delivering this project. The Kitchen Tool Library has been a focus this year and will soon be ready for people to borrow gadgets and appliances.

Manna Gum is proud to be the champion partner of the Food System Alliance, a recipient of a \$750,000 VicHealth grant over three years, which will begin delivering food resilience initiatives in 2026. We thank all volunteers and staff for their dedication and contributions over the past year. A special recognition goes to Linley, Rhonda, and Sandra, who have each given ten years of outstanding volunteering to strengthen Manna Gum and our community.

Charmaine Reader

Charmaine Reader

Secretary, with input from Board members.



TREASURER'S REPORT

This year has seen a turnaround in Manna Gum's annual accounts to a surplus. The main drivers of our financial performance have not changed but we received generous donations which flipped the overall result.

Manna Gum's resources (financial and in-kind) come from three sources: mainly recurrent support from all three levels of government; grants from public and philanthropic organisations; and donations.

Recurrent grants are similar to baseload energy – the organisation is built on them but they're don't meet demand. This year we received just over \$100,000 from the Victorian Government under the Neighbourhood Houses Coordination Program – about 40% of our operating revenue.

Our contract with the Commonwealth Government as an agency of Services Australia contributes nearly \$35,000 (about 14%) to operating income but does not cover the cost of delivering the service.

South Gippsland Shire Council provides some funding to Manna Gum but its main contribution is in-kind, most notably in the provision of our premises for a nominal licence fee.

Grants have always been important to Manna Gum's operations. This year tied grant funding contributed over \$70,000 to our income. However, grants are competitive; applying for them, managing them and acquitting them are resource-intensive; and the funds are tied to specific deliverables.

The other pillar of Manna Gum's funding is donations – both financial and in-kind. This year we have been very grateful to receive a donation of \$47,500 from the Mackenzie Family Foundation as well as continued support from Bendigo Bank. As well, Manna Gum could not survive without the in-kind support of its volunteers who contribute at every level of the organisation. The challenge with donations is their precarious nature.

This year it became clear that Manna Gum has no prospect of attaining inclusion on the Deductible Gifts Register (DGR) without a change in taxation policy. While that limits our access to philanthropic funds, we have access to the DGR through Australian Neighbourhood Houses and Centres Association, albeit at a cost of 5%.

With last year's departure of Simone Goeckes as in-house bookkeeper, Manna Gum employed Kerry Strauss as a Finance Assistant with support from external book keepers.

At the same time, we decided to switch accounting software from MYOB to Xero. That transition has not worked as well as we'd hoped but I trust things will settle down soon.

This year has been a good one for Manna Gum financially but ongoing challenges remain. This is most clearly demonstrated by increases in our operating expenses of 14% while operating income increased by only 9%.

This is my final report as Treasurer. It's been a privilege to be part of Manna Gum and to feel the halo effect of its standing in the community. Thanks to all of the Board members, staff and volunteers who have made the last decade so memorable but my particular thanks to Bec, Simone Goeckes and Kerry Strauss.

Some discussion of the impact on the Income and Expenditure Statement and the Balance Sheet follows:

INCOME AND EXPENDITURE STATEMENT

In 2024/25, total operating income increased by around \$20,000, whereas operating expenses rose by nearly \$40,000. The gap was bridged most notably by the \$47,500 donations from the MacKenzie Family Foundation.

Other significant increases in our income derived from higher course fees, donations and gifts (apart from the MacKenzie Family Foundation), indexation of recurrent grants, events and profit from the community café. This social enterprise is consolidating its contribution to Manna Gum's results and now comprises about 7% of income.

Apart from the general cost increases across the board felt by all organisations and families, notable expense increases for Manna Gum were staffing cost increases (mainly from increased hours of operation) and payments to the external bookkeeping, mainly for the setting up and transition to Xero.

BALANCE SHEET

The Balance Sheet for this year shows an increase in net assets and total equity, both of about \$10,000 compared with last year.

We finished the year with about \$246,200 more in the bank. This is mainly because of the timing of donations and grants unexpended.

Linley Granger

Treasurer



MANAGER'S REPORT

This year there was growth in our community impact and engagement, with good progress toward our long-term goal of diversifying income streams. This was achieved against a backdrop of considerable strain across the broader Neighbourhood House sector, where stagnant funding models mean almost half of organisations operate in deficit and are at risk of closure. At the same time, community need for our services continues to grow, underscoring the importance of our work and partnerships.

Our partnership with the South Gippsland Shire Council ArtCube project was a highlight of the year. Over three months, the ArtCubes hosted resident artists, workshops, and community events. We experienced a noticeable rise in community engagement because the ArtCubes enabled us to offer a wider variety of programs and events. This success was made possible through many hours of volunteer contribution, led by Board members on a subcommittee dedicated to fun and celebration. A special thank you to Beth Arnold for her dedication and creativity in her role as ArtCube Coordinator.

We also invested significantly in infrastructure to support our programs. The Tiny Towns grant enabled the purchase of a new commercial-grade cooktop, while the Community Bank Toora & Foster contributed two new ovens and a split system for the kitchen. A major grant from the DFFH Community Food Relief program supported a range of additional equipment, some of which will soon be available for hire through our Kitchen Tool Library, set to launch in 2026.

Our Hygiene Station feasibility study is now complete, moving us into the funding stage of this long-term project. Years of development have involved extensive community consultation and engagement. Once realised, the station will provide shower and laundry facilities for people experiencing homelessness, those without hot water, and the wider community during power outages, building local resilience and support networks.

I extend a huge thank you to our dedicated staff and volunteers for their hard work—in 2024 our volunteer contributions came to an estimated value of \$263,098! We especially enjoyed celebrating Volunteer Week with a lunch event held in partnership with South Gippsland Hospital and the Royal Flying Doctors. We also farewell Rhonda Mallows, who worked across all aspects of the organisation for ten years and brought so much energy and empathy to her volunteering with Manna Gum.

We are particularly grateful to members of the Filipino community for their generosity and engagement this year. They contributed traditional food for our Christmas lunch, helped decorate an ArtCube with a traditional nativity scene, and shared dishes for a community multicultural lunch. Their involvement highlighted the increase of cultural diversity in our district and strengthened connections across the broader Corner Inlet community.

Finally, a big thank the Board for their ongoing support and guidance, which continues to be invaluable in helping Manna Gum grow and respond to community needs.

Rebecca Matthews

Manager





MANNA GUM COMMUNITY HOUSE
ANNUAL REPORT 2025

EDUCATION & TRAINING REPORT

This year, Manna Gum Community House continued to deliver practical, community-focused education, with a strong emphasis on digital literacy, adult learning, and partnerships.

Our collaboration with South Gippsland Hospital included a four-week Intermediate Excel course for staff, developed with workplace trainer Jennifer Miles. This successful pilot is paving the way for more tailored workplace digital literacy programs. Similar work with Leongatha Hospital has resulted in a digital workplace skills pilot scheduled for July 2025.

Our Work for Yourself program received major recognition this year, winning the Learn Local Pre-Accredited Program Award (Small Provider category) at the 2024 Learn Local Awards. ACFE also selected the program as a case study for the Minister for Training and Skills, and VALBEC invited us to feature it in Fine Print magazine, highlighting its role in supporting adult literacy.

In October, Tim Beacham stepped down after many years of dedicated digital support. We are immensely grateful for his patience, expertise, and generosity, which made learning accessible and enjoyable for so many. We also warmly thank Genevieve Moore, who joined our team in 2023 and delivered the Care & Support and digital literacy programs with deep connection, care, and her much-loved sense of humour.

Despite staffing changes affecting Tech Club and Toora Tech Class, we delivered 818 digital hours of training.

Our hospitality course in partnership with Yooralla and Leongatha Community House continued successfully in its third year, and community learning thrived with Introduction to Permaculture, delivered in partnership with Buckley Park Community Farm and Piggery Road Permaculture, which was very well attended.

We also secured a \$3,500 Sustainability Grant to support workplace digital literacy initiatives and applied for additional technology funding to enhance classroom resources. Despite challenges, the year brought strong partnerships, sector recognition, and steady program delivery.

Rebecca Matthews

Manager





MANNA GUM COMMUNITY HOUSE
ANNUAL REPORT 2025

TOORA HUB

The Hub at Toora Primary operates on Tuesday during school term, as a free program for parents and carers in the local community to socialise, support, and engage. We offer a supervised playgroup for preschoolers, morning tea, and optional workshops based on participant feedback. There is no booking system or timing expectations – participants arrive and leave between 9 and 11 a.m., a flexibility that continues to be welcomed.

2025 brought a transition in the Facilitation role, with Jacqueline Southwell's dedication and warmth setting a strong foundation through to December 2024. Beth Arnold stepped into the Facilitator role in January 2025, supported by Karly Waters initially, and currently Ellen Taylor and Natalie van Aken. Early in the year, a more detailed enrolment process was introduced with support from Rebecca Matthews and Sue Burke, helping us better understand and respond to participant needs.

The program continues to centre on creating a safe space for community connection. Each week we gather for morning tea and regularly offer optional workshops. Through conversations and observations, we've found that workshops where hands are busy and conversation flows freely are most valued. This feedback directly informs what we offer and how workshop hosts approach their sessions.

Throughout the year, we welcomed local artists to lead workshops, including Ann-Maree Gentile for ceramics, Daria Bryers for creative craft sessions, Kate Smiley for crochet, stitching and fabric printing, and Lisa from MYLI Foster Library for storytime sessions.

Between workshops, gathering around the kitchen table with drinks from the local café and morning tea creates natural opportunities for connection and conversation.

Toora Primary School continues to be a supportive partner. In 2025, we moved from the Toora Primary Gym to the Art/Music Room, gaining heating, cooling, and interaction with the school grounds. Our funding from the MacKenzie Foundation, Community Bank Toora and Foster, and Latrobe Health Services enabled us to deliver a quality and meaningful program.

Attendance has included cross-generational participation, from great-grandparents to young families. The Hub Facebook page keeps growing, making program activities visible to the wider community. Staff engaged in professional development this year, including the Accidental Counsellor Workshop and the South Coast Playgroup Summit, bringing back valuable tools and regional connections.

Participant feedback tells us the Hub matters: "my little one went home and told all our family about the hub...we are so lucky" and "it's so great to have this program happening." The program continues to evolve through ongoing conversations with participants, ensuring we respond to what our community needs.

Beth Arnold

FACILITATOR



MANNA GUM COMMUNITY HOUSE
ANNUAL REPORT 2025

OUR PLACE - YOUTH GROUP

Meeting weekly on Mondays after school during the school term, until 6pm, our participants are between the ages of 12 and 16.

During this year, we have welcomed Wilkie as a volunteer from Foster Secondary College and Trinity as a student on placement. It is valuable to have more young people involved in Our Place, as they often provide a conduit between participants and staff. Maya has continued to assist in the kitchen and beyond, and all of these young people have built a relaxed and trusting rapport with our participants.

We have begun to fully utilise the equipment purchased last year with a grant from the Gardiner Foundation, and participants are now confident to request or locate equipment they want to use on a weekly basis. This has been a solid and welcome investment for the group, as they have learnt that they have both access to and responsibility for the activities they choose.

At the end of this year, we have been working on updating our Code of Conduct to make it more compact and straightforward. Trinity has worked with our participants, actively listening to their ideas, to create an agreement that more closely aligns with the current group's values.

It remains of the highest importance to continue promoting a youth-led approach, listening to, understanding, and implementing the ideas they voice. Maintaining a strong bond between the community and our youth is a vital part of this program. I highly recommend seeking and actively recruiting more youth-focused staff and volunteers to continue building on the trust and communication established through this program with Manna Gum Community House.

This program does not receive regular, long-term funding, so we are very grateful for the financial support of several local organisations that have made it possible this year: Toora and Foster Community Bank, Foster RSL, Foster Rotary, and Toora Lions.

I appreciate the opportunity to coordinate this program and look forward to following its progress as I move on to other study and career paths. What I will miss most is the genuine honesty, respect, and passion our young people demonstrate in the face of an uncertain future.

Ann Tereze

YOUTH WORKER





MANNA GUM COMMUNITY HOUSE
ANNUAL REPORT 2025

COMMUNITY CAFÉ

Manna Gum Community House Café is a nurturing and welcoming space for the community, our regulars, and our volunteers. It remains a hive of activity on Mondays and Tuesdays, hosting a variety of groups who gather to connect. The lunches, great coffee, and homemade sweet treats are a highlight of many people's week, and all remain reasonably priced.

The commitment and dedication of our volunteers make the café a special part of the Corner Inlet community. Hosting the year nine students volunteering through the Foster Secondary College Community Program is always a pleasure, and this year we were delighted to welcome Bo and the two Abbys.

Volunteers and staff also ran a very successful Christmas stall in Foster, with the Christmas cakes once again proving to be bestsellers. The street stall offers a wonderful opportunity for community engagement and conversation, and everyone enjoys the raffle, as well as the many delicious sauces and preserves available for sale.

Robyn Carseldine

VOLUNTEER AND BOARD MEMBER





MANNA GUM COMMUNITY HOUSE 2025

REAL IMPACT. REAL VALUE.

INCOME \$355,316 **VALUE** \$1,357,320

THIS FIGURE INCLUDES THE VALUE OF:

Improved quality of life through social connection:	\$188,151
Volunteer contributions:	\$263,098
Emergency relief provided:	\$193,072
Services provided:	\$54,520
Adult Community Education:	\$658,479

THIS COMMUNITY VALUE EQUATES TO:

\$3.82 for every \$1 of income
\$13.76 for every \$1 of Neighbourhood House Coordination Program funding
Over **\$782.77** for every hour the neighbourhood house is in use



These values are produced by Neighbourhood Houses Victoria based on data provided by Manna Gum Community House in the 2024 Neighbourhood Houses Survey. Only a limited range of activities where a determinable valuation method exists are included.

EMERGENCY RELIEF VALUE INCLUDES:

Food and groceries:	\$169,588
Food vouchers:	\$7,464
Cash/prepaid or gift card:	\$4,440
Fuel Vouchers:	\$1,980
Clothing:	\$600
Personal care & hygiene items:	\$9,000

SERVICES VALUE INCLUDES:

Computer/internet usage:	\$312
Facilities use or hire:	\$24,852
Résumé assistance:	\$360
Auspicings other organisations:	\$3,162
Community lunch, frozen or other meals:	\$15,600
Fee for service activities:	\$10,234

EMPLOYMENT VALUE 2.9 FTE JOBS

including 2.1 direct and 0.8 indirect
Full Time Equivalent positions





MANNA GUM COMMUNITY HOUSE
ANNUAL REPORT 2025

PEARL PARK MUSIC FESTIVAL

The sun beating down on everyone was not the only thing that got temperatures rising at the biennial Pearl Park Music Festival last Saturday. Held on the beautiful lawns surrounding Stockyard Creek in South Gippsland's Foster, the exhilarating music had the crowds pumping, even when simply tapping your toes was hard work in the heat. Music-lovers determined to outsmart the hot sun descended on the park early, reserving their deck chairs under large umbrellas and shady trees, making full use of South Gippsland Water's large water trailer to keep cool and hydrated.

Festival-goers wandered through the many adjoining market stalls selling beautiful local produce and art, while food-lovers were treated to the exquisite and abundant selections from Nicole Holder's The Kitchen Table food van well into the night. Foster Rotary and the Foster Outdoor Pool Committee also kept the hungry crowds fed with their beautiful barbecues, and the Crepe Mama served sweet and savoury crepes. Needless to say, the line at the ice-cream van was continuous from morning until night! Stockyard Gallery's beautiful See the Song exhibition brought music and art together. Prom Coast Uke3A and Singers popped up, flash mob-style, during intervals. Children danced through the crowds with Meg Williams' gorgeous creations painted on their faces, and the wonderful Tika Hicken delighted the crowd with her stunning artwork created to the music throughout the day.

Relief came as the sun descended, and the soft lawn dance floor was bursting at the seams with those unable to contain themselves any longer. By nightfall, it was on for young and old! Twelve solid hours of non-stop live folk, hip-hop, blues, funk, country, and rock music were enjoyed by all. The exceptional music scene is thriving in this region, and twelve hours wasn't nearly enough to showcase it all. Music has the unique capacity to bring all people from our communities together in a joyous way, and this free festival did just that. The town of Foster was alive with the sounds of the brilliant musicians who are part of our thriving artistic community, and the cheers, hollers, and whistles of those who love to share in their work. To all the bands who performed that day, thank you. These musicians make even the hottest of days a complete joy!

A very special thank you to my team of festival organisers Bec Matthews and Tammy Basso-Bondini for creating a space for our beautiful musicians to be heard. Their dedication to the arts is constant and passionate. To the major financial sponsors — South Gippsland Shire Council, Community Bank Toora and Foster, Foster Foodworks — and major partner Manna Gum Community House, it needs to be said that this festival could not be staged without them. Their generous support of music and community events in the local area is exceptional and greatly appreciated.



A special thank you also goes out to the many volunteers who work tirelessly during the week of the festival, as well as the financial contributors and local businesses that donate raffle prizes and financial support during the many months of fundraising. Our town is so lucky to have such generous, supportive businesses and community organisations. And finally, thank you to the amazing music-loving MC, Paul Greenhalgh, who made introducing the musicians as entertaining as the music!

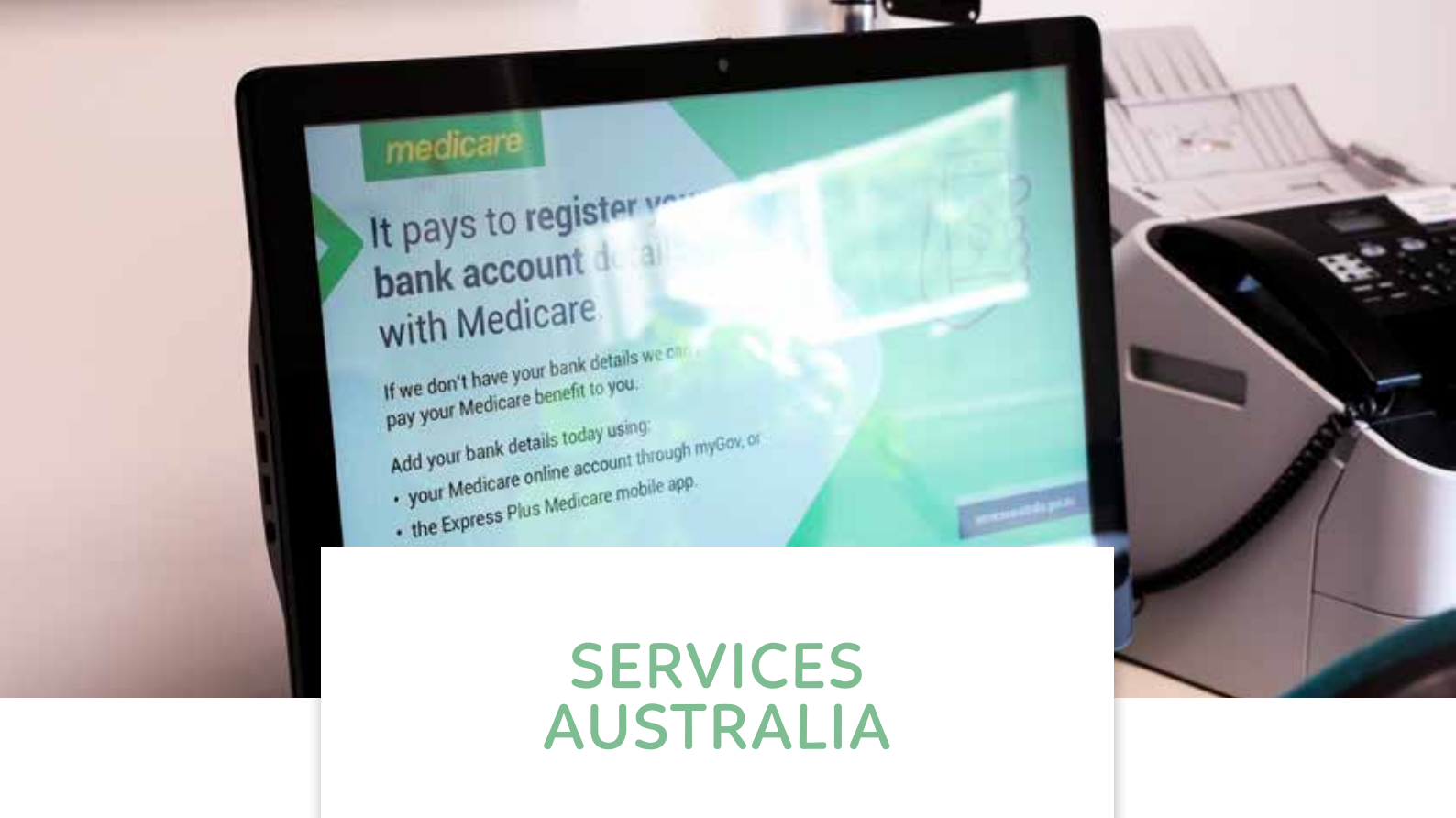
Until the next Pearl Park Music Festival, check out the bands on the website and keep listening to the fine music being created in our local surroundings. And remember — shop local, eat local, and feast off local music!

Facebook @pearlparkmusicfestival
Instagram @pearl_park_music_festival

Rebecca Bone

Festival Founder and Creative Director





SERVICES AUSTRALIA

This year, our Services Australia agency supported 1,178 customer enquiries, continuing the steady upward trend in demand for this service. The enquiries we handle are diverse, ranging from help accessing government services, setting up MyGov accounts, completing forms, and verifying identification, through to more complex situations where clients are navigating multiple barriers to receiving payments or services.

Our contract with Services Australia increased our required opening hours from 10 to 15 per week this year. In response to ongoing growth in community need, we will expand our hours again in the new financial year, extending by a further 10 hours. The agency will move to a five-day-a-week service, fully aligned with the opening hours of the main office.

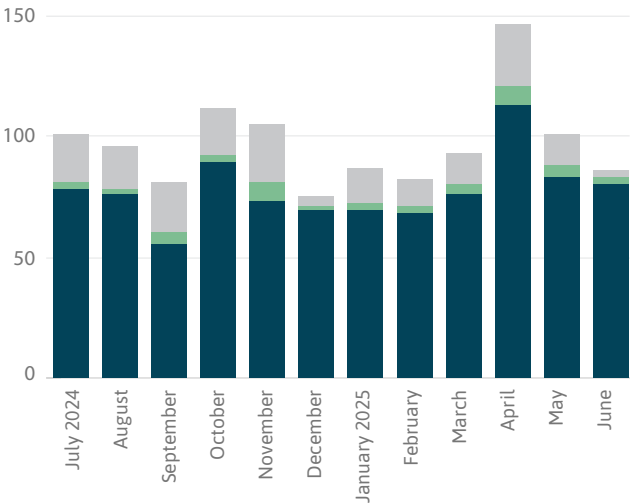
Across both of our semi-annual reviews with our Zone Coordinator, the Foster agency received strong praise for our compliance, professionalism, and the high standard of customer service we provide.

A heartfelt thank you goes to our Services Australia staff, Shannon and Sandra, who support our customers, including those experiencing long-term or complex challenges. We were also pleased to welcome Val Young from the Korumburra agency as a casual staff member this year. Their kindness, efficiency, and skill in guiding people through the system are deeply valued by so many of our community members.

Rebecca Matthews

MANAGER

Services Australia Agency Client Visits. July 2024 - June 2025





EMERGENCY RELIEF COMMUNITY DOORWAYS SERVICE

In 2024, demand for emergency relief continued to grow, reflecting increasing financial stress across our community. Manna Gum's Emergency Relief (ER) Service provided vital support to community members, with a total value of assistance of \$193,072*. This included food and groceries (\$169,588), food vouchers (\$7,464), cash/prepaid or gift cards (\$4,440), fuel vouchers (\$1,980), clothing (\$600), and personal care and hygiene items (\$9,000). Our Christmas hamper drive also made a meaningful impact, with \$3,213 in cash donations, 2,960 vouchers contributed, and 79 households supported.

A Department of Families, Fairness and Housing (DFFH) Community Food Relief grant allowed us to review and consolidate our ER service, develop a fundraising strategy, and enhance food service infrastructure, including a significant investment in establishing a Kitchen Tool Library. This review helped ensure our service remains in scope with our resources, reduces stress on staff and volunteers, and strengthens our ability to deliver consistent, high-quality support to the community.

Following changes to the Salvation Army voucher system, our long-term partnership with the Salvation Army has concluded. We are deeply grateful for their support over the years, which enabled many people to access essential vouchers. Moving forward, Manna Gum will focus on maintaining a well-stocked foodbank, personal hygiene items, bedding, new parent packages, and frozen ready-made meals, continuing to provide community-focused support in partnership with local organisations.

This essential work would not be possible without our generous partners, community donors, local businesses, and the dedication of our staff and skilled volunteers. Special thanks to Juliette, Sandra, Shannon, Rhonda, Karen, Noelle, Kerry, and Joyce for their invaluable contributions.

*Neighbourhood Houses Victoria Community Value Report 2024

Rebecca Matthews

MANAGER



STRATEGIC 2023 - 2025

VALUES: RESPECT. ACCOUNTABILITY. INCLUSIVENESS.

- We deliver programs which support education and employment pathways including:
 - Learn Local government funded courses
 - Access to online learning through our digital hub
- We deliver programs which support digital literacy
- We provide general interest workshops that are low-cost and accessible



- We want to audit and review programs, services, education and activities to ensure they are supporting our purpose
- We want to enhance the inclusiveness of our programs
- We want to sustain ACFE funding over the long term through developing strategies for reaching hard to reach learners

- We provide welcoming and non-judgemental support services
- We provide a weekly youth group
- We provide a space for community groups and services that share our values
- We provide opportunities for people to volunteer
- We provide accessible and safe places for people to gather
- We partner with others to deliver local support services and activities
- We hold events that facilitate social connection
- We attempt to make our services accessible to all members of the Corner Inlet community, regardless of their location



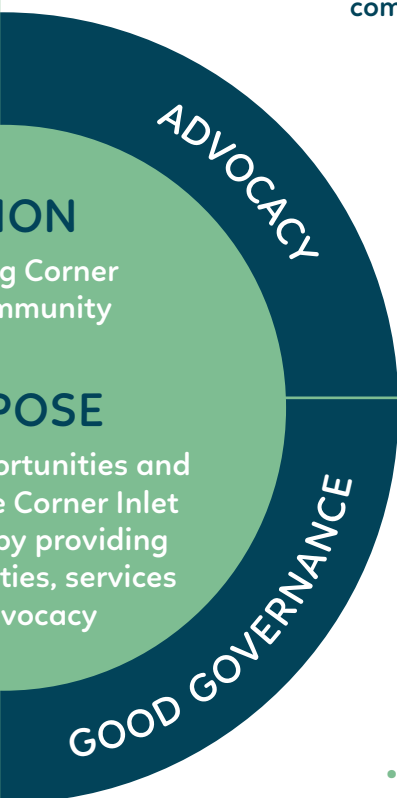
- We want to secure funding for an inclusive, long-term Corner Inlet-wide youth program
- We want to finish the Gathering Place (outdoor area at Manna Gum Community House Foster)
- We want to develop a process for consultation with diverse and underserved groups across all areas of Corner Inlet, including LGBTQI+ and multicultural communities
- We want to explore solutions for mobility of our services to reduce transport-related access barriers



C PLAN

6

ABILITY. SUSTAINABILITY. INCLUSION



- We actively listen to the Corner Inlet community and respond to collective needs
- We advocate with and on behalf of community members to endeavour to meet their needs
 - We champion issues which are important to the ongoing wellbeing of Corner Inlet

- We want to build and maintain relationships to influence policy decisions as a respected voice on key issues that matter to the Corner Inlet community
- We want to scan and scope emerging issues and opportunities that could improve our outcomes



- We manage our organisation to a high standard
- We are transparently accountable to funding bodies, members and the community
- We address sustainability in everything we do

- We want to maintain and build on our funding base
- We want to guarantee funding security and explore additional funding sources to support business continuity and growth
- We want to develop a business continuity plan that includes risk management, sustainability, succession, capability, and responsiveness to change

- We invest in the development and effectiveness of the Committee of Management
- We maintain and develop our buildings and facilities to support our mission
- We review, refresh and revise a policy framework and comprehensive policy suite
- We want to review and update our Rules

- We want to develop a Marketing Plan to ensure that Manna Gum continues to meet the needs of the Corner Inlet community
- We want to establish sub-committees to address and progress strategy plan items
- We want to establish an advisory panel with specialist expertise we can draw on as needed





ART CUBES





BOARD & STAFF

BOARD

President (Jul 24-March 25)
Sue Plowright

Acting President (March 25 - June 25)
Catherine McGlead

Secretary
Charmaine Reader

Treasurer
Linley Granger

Members
Ann-Maree Gentile
Robyn Carseldine
Michael Shirrefs
Kerry Strauss
Juliette Reeve

STAFF

Manager
Rebecca Matthews

Bookkeeper
Kerry Strauss

Centrelink & Medicare Agents
Sandra Liversidge
Shannon Gee
Val Young

Community Support Coordinator
Shannon Gee

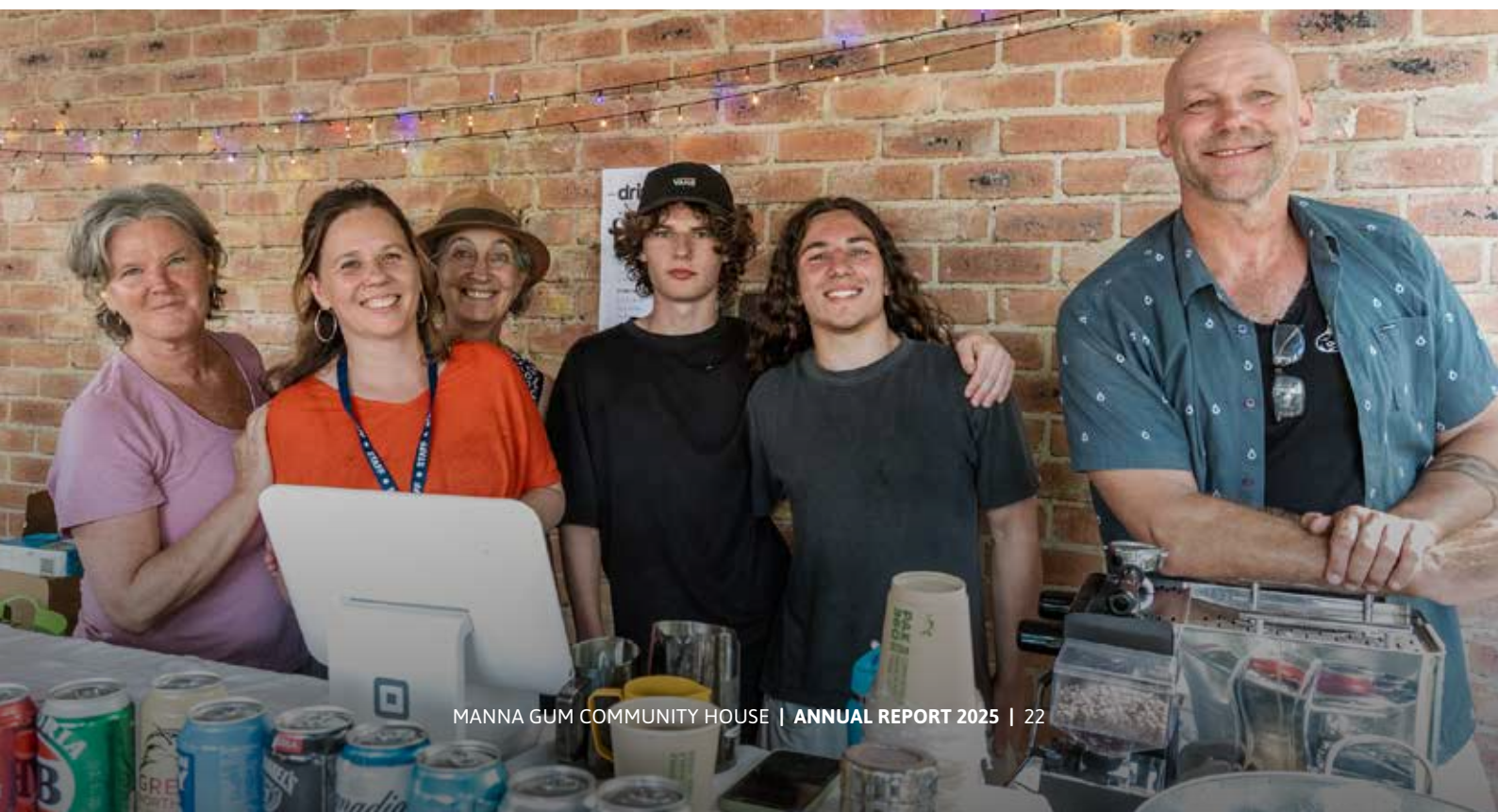
Learn Local Tutors
Genevieve Moore
David Pollard

'Our Place' Youth Worker
Ann Terese

Toora Hub Facilitator
Jacqueline Southwell & Beth Arnold

Technology Club Tutor
Tim Beacham

Community Lunch Facilitator
Juneen Schulz





SPECIAL PURPOSE FINANCIAL REPORT

FOR THE YEAR ENDED 30 JUNE 2025
A0007556K



MANNA GUM COMMUNITY HOUSE INC.
A0007556K

INCOME AND EXPENDITURE STATEMENT
FOR THE YEAR ENDED 30 JUNE 2025

	NOTE	2025	2024
INCOME			
Donations/gifts		11,009	7,278
Fundraising income		-	3,002
Internet/photocopying/printing/other income		918	917
Membership fees		259	337
Events		9,549	1,960
WGAC T-Paper		5,229	5,484
Room hire		5,920	4,768
Community Shop		18,671	15,404
Course Income		49,518	47,021
DFFH contract		100,334	96,889
Services Australia contract		34,912	27,848
Auspicing income		1,500	3,000
PSB2 outreach		-	390
Emergency relief		10,328	14,859
Total income		248,147	229,157
EXPENDITURE			
Accounting fees		2,322	-
Auditor review fee		1,800	1,790
Bank fees		692	500
Bad debts expense		408	-
Council licence		104	104
Council rates		532	519
Telephone		971	448
Insurance		174	167
Internet		1,733	1,386
Interest		105	-
Electricity		2,612	1,634
Water		1,307	1,951
Security		716	546
Repairs & maintenance		2,884	1,781
Computer expenses		250	676
Printing/photocopying		868	563
Software & subscription		1,768	1,800
Waste removal		737	350
Stationery/office supplies/paper		1,230	1,485
Cleaning expense		6,510	7,211
Police checks		120	-
Community House equipment		705	576
Fundraising expenses		-	288
Gifts and donations		272	413
Groceries		248	333
WGAC		4,453	4,737
Advertising & marketing		1,781	2,086
Subscriptions & memberships		811	765
Room hire		367	193
Programs/events		5,441	1,205
Catering		578	942
Staff training & development		1,423	2,659
Community Shop expenses		4,569	4,555
Miscellaneous expenses		1,460	-
Tutor fees		24,765	11,858
Course refunds		50	280

MANNA GUM COMMUNITY HOUSE INC.
A0007556K

INCOME AND EXPENDITURE STATEMENT
FOR THE YEAR ENDED 30 JUNE 2025 (continued)

	NOTE	2025	2024
EXPENDITURE (continued)			
Emergency relief		17,076	16,615
Depreciation expense	3	15,508	14,850
Wages & salaries expense		193,852	171,873
Superannuation expense		20,534	18,168
Leave provision expense (annual and long service leave)		(4,522)	3,178
Workcover premium		4,282	5,490
Total expenditure		321,496	283,975
Net operating deficit for the financial year		(73,349)	(54,818)
OTHER INCOME			
Interest income		933	962
Auspicging income:			62,399
- Fish Creek Community Carnival		-	-
- Pearl Park Music Festival		31,378	-
- Prom Coast News		30,557	-
- Front Foot / Back Beat		-	1,333
- Toora Youth Group		640	1,364
- Council Creative Fund - Sculptures		-	1,000
ACFE Training Delivery Support grant		4,789	4,492
Community Lunch		4,441	2,984
Our Place Youth Group		3,000	13,504
MacKenzie Family Foundation Donation		47,500	-
DFFH Community Food Relief Program		4,886	-
Hygiene Station Feasibility Study		8,000	-
ACFE Digital Adjustment Fund		-	1,506
Tiny Towns Grant		9,520	-
Project Green Plot (Self-funded)		-	850
ACFE Local Innovation Grant		-	8,000
Software Licence Support Grant		-	377
The Toora Hub		18,431	15,682
Court Fund Payment		2,142	2,858
Emergency Resilience Funding		4,630	1,370
Community Support Worker Grant		6,425	3,575
NHG Vaccine Program		1,809	3,903
NHG Resilience Grant		1,636	-
Kitchen upgrade funding		3,459	-
Ongoing contracts		2,599	-
Other operational income		1,249	-
Total other income		188,024	126,159
OTHER EXPENSES			
Auspicging expenses:			62,399
- Fish Creek Community Carnival		1,200	-
- Pearl Park Music Festival		31,561	-
- Prom Coast News		30,557	-
- Front Foot / Back Beat		-	1,333
- Toora Youth Group		640	1,364
- Council Creative Fund - Sculptures		-	1,000
ACFE Training Delivery Support grant		2,790	3,402
Community Lunch		3,202	3,584
Our Place Youth Group		8,449	4,178
ACFE Digital Adjustment Fund		134	1,510



MANNA GUM COMMUNITY HOUSE INC.
A0007556K

INCOME AND EXPENDITURE STATEMENT
FOR THE YEAR ENDED 30 JUNE 2025 (continued)

	NOTE	2025	2024
OTHER EXPENSES (continued)			
Project Green Plot (Self-funded)		636	850
The Toora Hub		3,382	3,520
ACFE Innovation Grant		-	2,019
Court Fund Payment		1,123	2,858
Emergency Resilience Funding		-	1,370
DFFH Community Food Relief Program		681	-
Grant expenses		3,800	-
Hygiene Station Feasibility Study		6,200	-
MacKenzie Family Foundation Donation		1,024	-
Tiny Towns Grant		8,670	-
Total other expenses		104,049	89,387
Net surplus / (deficit) for the year		10,626	(18,046)

The accompanying notes form part of this financial report.

MANNA GUM COMMUNITY HOUSE INC.
A0007556K

BALANCE SHEET
FOR THE YEAR ENDED 30 JUNE 2025

	NOTE	2025	2024
CURRENT ASSETS			
Petty cash & cash floats		252	228
Cash at bank:			
- Manna Gum Community House		395,448	123,889
- Debit card		1,691	1,000
- Grant account		<u>1,066</u>	<u>27,116</u>
		398,205	152,005
Term deposit		26,622	25,848
Accounts receivable		820	4,708
Prepayments		1,900	-
TOTAL CURRENT ASSETS		427,799	182,789
NON CURRENT ASSETS			
Plant & equipment	3	58,637	58,453
TOTAL NON CURRENT ASSETS		58,637	58,453
TOTAL ASSETS		486,436	241,242
CURRENT LIABILITIES			
Accounts payable		257	5,247
Accrued expenses		6,224	635
PAYG & GST payable		24,473	11,713
Superannuation payable		2,322	1,329
Annual leave provision		21,254	10,177
Long service leave provision		4,854	12,132
Income in advance	4	267,382	50,965
TOTAL CURRENT LIABILITIES		326,766	92,198
TOTAL LIABILITIES		326,766	92,198
NET ASSETS		159,670	149,044
EQUITY			
Opening accumulated surplus		149,044	167,090
Current year surplus / (deficit)		10,626	(18,046)
TOTAL EQUITY		159,670	149,044

The accompanying notes form part of this financial report.



MANNA GUM COMMUNITY HOUSE INC.
A0007556K

STATEMENT OF CHANGES IN EQUITY
FOR THE YEAR ENDED 30 JUNE 2025

	Accumulated Surplus
Balance at 1 July 2023	167,090
Operating deficit for the year	(18,046)
Balance at 30 June 2024	149,044
Operating surplus for the year	10,626
Balance at 30 June 2025	159,670

The accompanying notes form part of this financial report.

MANNA GUM COMMUNITY HOUSE INC.
A0007556K

**CASH FLOW STATEMENT
FOR THE YEAR ENDED 30 JUNE 2025**

	2025	2024
CASH FLOWS FROM OPERATING ACTIVITIES		
Fundraising and donations	58,509	10,280
Operating grants received	110,367	106,260
Other operating income received	153,236	141,586
Interest received	933	962
Payments to employees and suppliers	(336,387)	(309,032)
Other income received	378,081	91,451
Other expenses paid	(102,049)	(89,215)
NET CASH USED IN OPERATING ACTIVITIES	262,690	(47,708)
 CASH FLOWS FROM INVESTING ACTIVITIES		
Purchases of property, plant & equipment	(16,691)	(6,964)
Proceeds from disposal of assets	999	-
Increase in term deposits	(774)	(719)
NET CASH USED IN INVESTING ACTIVITIES	(16,466)	(7,683)
 NET INCREASE / (DECREASE) IN CASH HELD	246,224	(55,391)
 CASH AT THE BEGINNING OF THE FINANCIAL YEAR	152,233	207,624
 CASH AT THE END OF THE FINANCIAL YEAR	398,457	152,233

The accompanying notes form part of this financial report.



**MANNA GUM COMMUNITY HOUSE INC.
A0007556K**

**NOTES TO THE CASH FLOW STATEMENT
FOR THE YEAR ENDED 30 JUNE 2025**

CASH FLOW INFORMATION	2025	2024
a) Reconciliation of cash for purposes of cash flows:		
Cash on hand	252	228
Cash at bank	398,205	152,005
Total	398,457	152,233
 b) Reconciliation of net cash provided by operating activities to surplus / (deficit) from ordinary activities:		
Surplus / (deficit) from ordinary activities	10,626	(18,046)
Add back non-cash items:		
Depreciation	15,508	14,850
<i>Changes in assets & liabilities</i>		
(Increase) / decrease in accounts receivable	1,988	2,126
(Increase) / decrease in income in advance	216,417	(49,244)
Increase / (decrease) in trade payables	14,352	2,121
Increase / (decrease) in leave entitlement provision	3,799	485
 NET CASH PROVIDED BY / (USED IN) OPERATING ACTIVITIES	262,690	(47,708)
 c) The association has no credit standby or financing facilities in place.		
d) There were no non-cash financing or investing activities during the year.		

NOTES TO THE FINANCIAL REPORT
FOR THE YEAR ENDED 30 JUNE 2025

NOTE 1: SUMMARY OF MATERIAL ACCOUNTING POLICIES

This financial report is a special purpose financial report prepared in order to satisfy the financial reporting requirements of the *Associations Incorporation Reform Act (Vic) 2012* and the *Australian Charities and Not-for-profits Commission Act 2012*. The Board has determined that the association is not a reporting entity.

The financial report has been prepared on an accruals basis and is based on historical costs and does not take into account changing money values or, except where specifically stated, current valuations of non-current assets.

The following material accounting policies, which are consistent with the previous period unless otherwise stated, have been adopted in this financial report.

Accounting policies

(a) Income tax

The association is exempt from income tax due to the nature of its activities.

(b) Inventories

All costs except for fixed asset purchase are expensed at the date of purchase. No amount is brought to account for consumable stocks held on the balance day.

(c) Plant and equipment

Plant and equipment are measured on the cost basis at the date of purchase.

The carrying amount of plant and equipment is reviewed annually by the association to ensure it is not in excess of the recoverable amount from those assets. The recoverable amount is assessed on the bases of the expected net cash flows which will be received from the assets' employment and subsequent disposal. The expected net cash flows have not been discounted to present values in determining recoverable amounts.

Depreciation

The depreciable amount of all property, plant and equipment are depreciated over the useful lives of the assets to the association commencing from when the asset is held ready for use.

Leasehold improvements are depreciated over the shorter of either the unexpired period of the lease or the estimated useful lives of the improvements. The land and buildings are leased from the South Gippsland Shire Council. Refer Note 6 for the lease arrangements.

The depreciation rates used for each class of depreciable asset are:

Class of fixed asset	Depreciation rate
Plant and equipment	20% straight line
Leasehold Improvements	6.67 - 10% straight line

(d) Employee benefits

Provision is made for the association's liability for employee benefits arising from services rendered by employees to balance date. All employee benefits which are expected to be settled within one year and have been measured at their nominal amounts. Where the long service leave liability is not currently due, the liability has been calculated in relation to the probability of each employee remaining until the long service leave is entitled.

(e) Revenue

Revenue is recognised when the entity obtains control over the funds which is generally at the time of receipt.

Grant revenue is recognised in the income statement when the entity obtains control of the grant, and it is probable that the economic benefits gained from the grant will flow to the entity and the amount of the grant can be reliably measured.

If conditions are attached to the grant which must be satisfied before it is eligible to receive the contribution, the recognition of the grant as revenue will be deferred until those conditions are satisfied. Refer to Note 4 for the details of unexpended grant funding.

(f) Goods and Services Tax (GST)

Revenues, expenses and assets are recognised net of the amount of GST, except where the amount of GST incurred is not recoverable from the Australian Tax Office. In these circumstances the GST is recognised as part of the cost of the acquisition of the asset or as part of the item of expense.



**MANNA GUM COMMUNITY HOUSE INC.
A0007556K**

**NOTES TO THE FINANCIAL REPORT
FOR THE YEAR ENDED 30 JUNE 2025**

NOTE 2: RELATED PARTIES

Members of the Board receive no payment or other consideration for their services as Board members. Where a member of the Board is engaged to teach courses or to act in a managerial capacity that person receives no special advantage or other consideration when compared with other employees or tutors.

There were no related party transactions with Board members to disclose for this financial year.

NOTE 3: PLANT & EQUIPMENT	2025	2024
Leasehold improvements:		
Buildings – at cost	67,040	67,040
Less accumulated depreciation	<u>(36,944)</u>	<u>(29,746)</u>
Written down value	30,096	37,294
Office equipment:		
Office equipment – at cost	64,593	49,901
Less accumulated depreciation	<u>(36,052)</u>	<u>(28,742)</u>
Written down value	28,541	21,159
Total plant and equipment at written down value	58,637	58,453

Movements in carrying amounts:	Leasehold improvements	Plant & equipment	Total
Balance at beginning of year	37,294	21,159	58,453
Additions	-	16,691	16,691
Depreciation	(7,198)	(8,310)	(15,508)
Disposals (net)	-	(999)	(999)
Balance at end of year	30,096	28,541	58,637

NOTE 4: INCOME IN ADVANCE	2025	2024
Pearl Park Music Festival	9,981	8,548
ACFE Training Delivery Support grant	3,544	2,834
Community Lunch	-	1,272
Project Green Plot	722	563
Fish Creek Community Carnival	6,954	5,985
The Toora Hub	-	18,431
Toora Youth Group	396	136
Court Fund Grant	-	2,142
Emergency Resilience Funding	-	4,630
Community Support Worker	-	6,424
DFFH Community Food Relief Program	25,763	-
Kitchen Upgrade	736	-
MacKenzie Family Foundation	47,500	-
Prom Coast News	6,708	-
VicHealth – Food Systems	165,078	-
Total	267,382	50,965

NOTE 5: CAPITAL AND LEASING COMMITMENTS

The premises where the association operates is owned by the South Gippsland Shire Council. The current lease is valid from 1 August 2021 for 5 years with annual rental of \$104.

At the date of this report there are no significant capital commitments entered into by the Board.

STATEMENT BY MEMBERS OF THE BOARD
FOR THE YEAR ENDED 30 JUNE 2025

The Board has determined that the association is not a reporting entity and that this special purpose financial report should be prepared in accordance with the accounting policies outlined in Note 1 to the financial statements.

In the opinion of the Board, the financial report as set out on pages 2 to 10:

1. Presents a true and fair view of the financial position of Manna Gum Community House Inc. as at 30 June 2025 and its performance for the year ended on that date.
2. At the date of this statement, there are reasonable grounds to believe that Manna Gum Community House Inc. will be able to pay its debts as and when they fall due.

This statement is made in accordance with a resolution of the Board and is signed for and on behalf of the Board by:



Catherine McGlead
Acting President



Linley Granger
Treasurer

17 November 2025



INDEPENDENT ASSURANCE PRACTITIONER'S REVIEW REPORT
TO THE MEMBERS OF MANNA GUM COMMUNITY HOUSE INC.

We have reviewed the accompanying financial report, being a special purpose financial report, of Manna Gum Community House Inc., which comprises the balance sheet as at 30 June 2025, the income and expenditure statement, the cash flow statement and the statement of changes in equity for the year then ended, notes comprising a summary of significant accounting policies and other explanatory information, and the statement by members of the Board.

Board's Responsibility for the Financial Report

The Board of the association is responsible for the preparation of the special purpose financial report that gives a true and fair view and have determined that the basis of preparation described in Note 1 to the financial report is appropriate to meet the financial reporting requirements of the *Associations Incorporation Reform Act (Vic) 2012* and the *Australian Charities and Not-for-profits Commission Act 2012* and to meet the needs of the members. This responsibility also includes such internal control that the Board determine is necessary to enable the preparation of the special purpose financial report that gives a true and fair view and is free from material misstatement, whether due to fraud or error.

Auditor's Responsibility

Our responsibility is to express a conclusion on the special purpose financial report based on our review. We conducted our review in accordance with Australian Auditing Standard on Review Engagements ASRE 2415 *Review of a Financial Report: Company Limited by Guarantee or an Entity Reporting under the ACNC Act or Other Applicable Legislation or Regulation*, in order to state whether, on the basis of the procedures described, we have become aware of any matter that makes us believe that the special purpose financial report does not satisfy the requirements of the *Associations Incorporation Reform Act (Vic) 2012* and Division 60 of the *Australian Charities and Not-for-profits Commission Act 2012* including; giving a true and fair view of the association's financial position as at 30 June 2025 and its performance for the year ended on that date; and complying with the Australian Accounting Standards to the extent described in Note 1 to the financial report and the *Australian Charities and Not-for-profits Commission Regulations 2022*.

ASRE 2415 requires that we comply with the ethical requirements relevant to the review of the special purpose financial report.

A review of the special purpose financial report consists of making enquiries, primarily of persons responsible for financial and accounting matters, and applying analytical and other review procedures. A review is substantially less in scope than an audit conducted in accordance with Australian Auditing Standards and consequently does not enable us to obtain assurance that we would become aware of all significant matters that might be identified in an audit. Accordingly, we do not express an audit opinion.

Conclusion

Based on our review, which is not an audit, nothing has come to our attention that causes us to believe that the special purpose financial report of Manna Gum Community House Inc. does not satisfy the requirements of the *Associations Incorporation Reform Act (Vic) 2012* and Division 60 of the *Australian Charities and Not-for-profits Commission Act 2012* including:

- Giving a true and fair view of the association's financial position at 30 June 2025 and its financial performance and cash flows for the year ended on that date: and
- Complying with Australian Accounting Standards to the extent described in Note 1, the *Associations Incorporation Reform Act (Vic) 2012* and Division 60 of the *Australian Charities and Not-for-profits Commission Regulation 2022*.

Basis of Accounting and Restriction on Distribution

Without modifying our conclusion, we draw attention to Note 1 to the special purpose financial report, which describes the basis of accounting. The financial report has been prepared for the purpose of fulfilling the association's financial reporting responsibilities under the *Associations Incorporation Reform Act (Vic) 2012* and the *Australian Charities and Not-for-profits Commission Act 2012*. As a result, the special purpose financial report may not be suitable for another purpose.

CARDELL ASSURANCE & AUDIT

Lynda J. McKenzie
3A Billson Street
WONTHAGGI VIC 3995
Liability limited by a scheme approved under
Professional Standards Legislation

20 November 2025

3a Billson St Wonthaggi VIC 3995
MAIL PO Box 116 Wonthaggi VIC 3995

T 03 5672 3722
E contact@cardell.com.au

W www.cardell.com.au



HALLOWEEN & TWILIGHT MARKET





33 STATION ROAD FOSTER VIC 3960
PO BOX 176 FOSTER VIC 3960
(03) 5682 1101
OFFICE@MGCH.ORG.AU
MANNAGUMCOMMUNITYHOUSE.ORG.AU